

Customer :

customer

Customer part :

customer part

Comment :

Comment

S1=1.18

S2=1.81

Tmax=456

Tp S2=495.0

PI=0.4

HI=106

Sample =1659.10

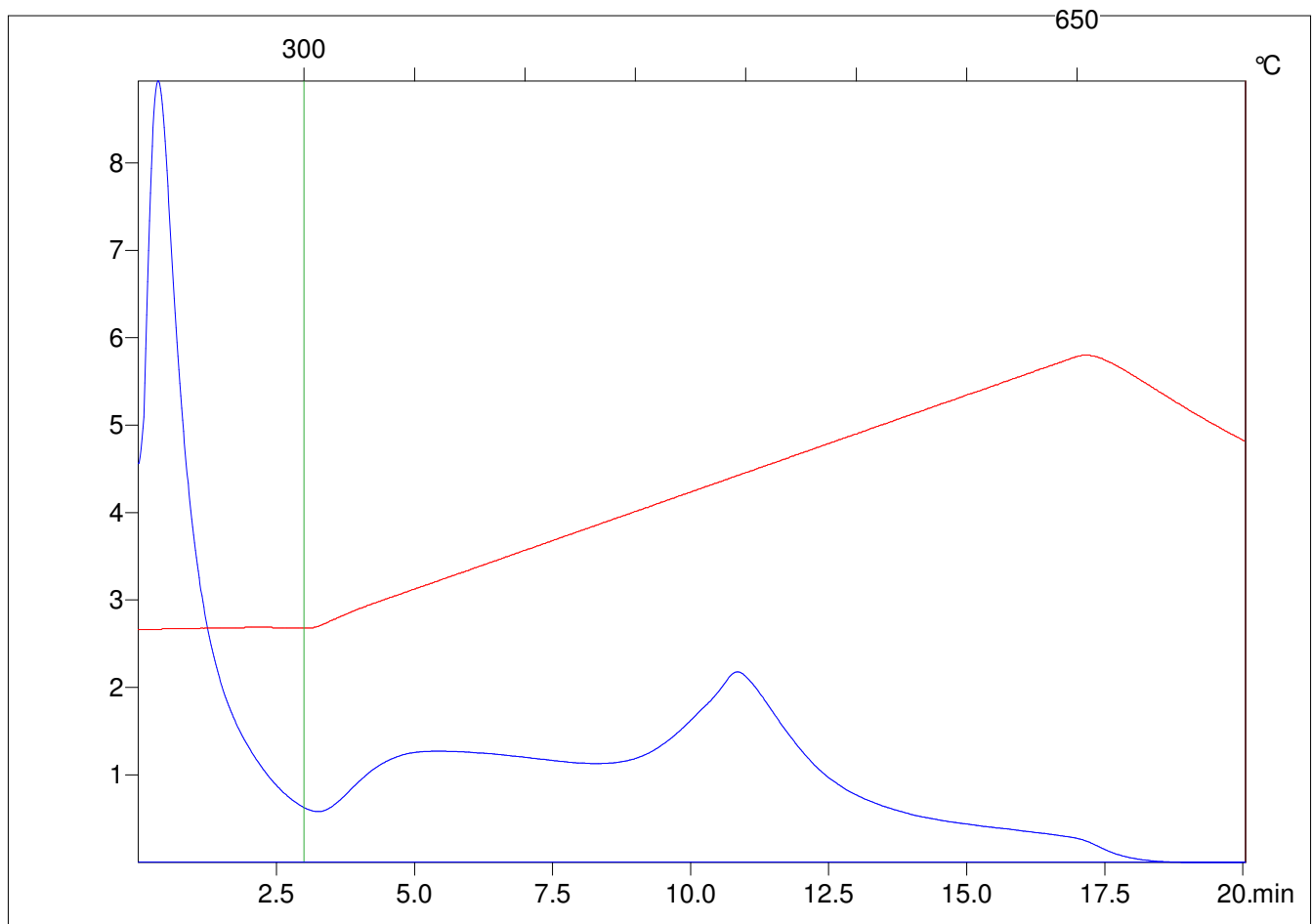
Method =Bulk Rock

Cycle=Basic

KFID(10*9)=1444

Qty =70.1

TOC=1.71



C:\VINC\PK1792\PK086.R00 : FID pyrolysis graphic

State

Pyro Status

Oxi Status